



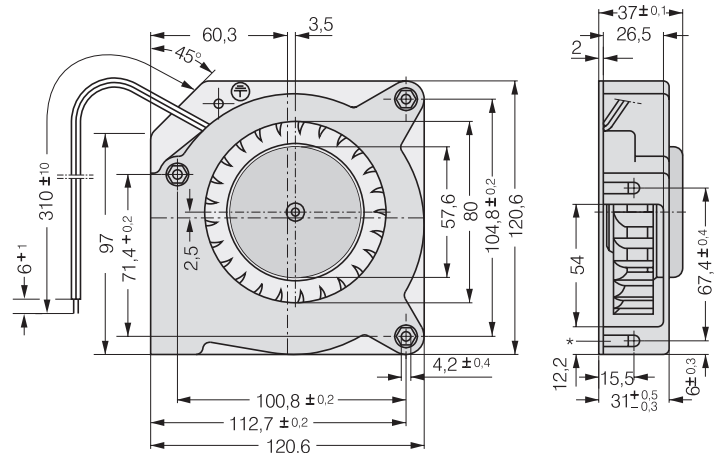
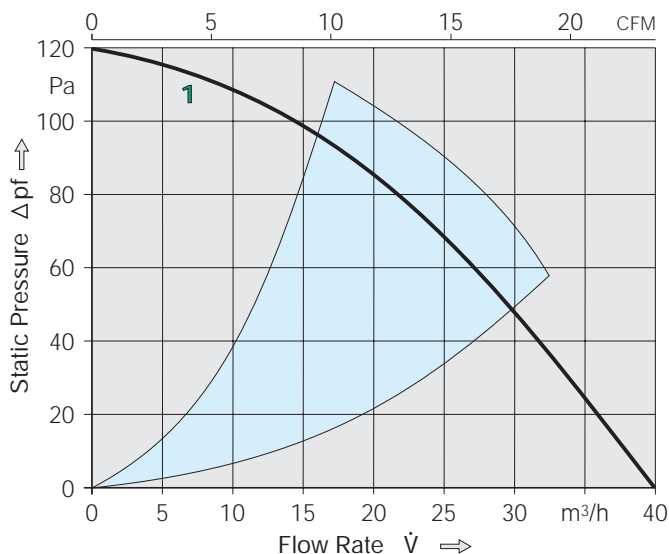
- DC radial blower with electronically commutated external rotor motor. Fully integrated commutation electronics. With electronic protection against reverse polarity, blocking and overloading by PTC-resistor; partially impedance protected.
- Spiral housing and blower wheel of

- fibreglass reinforced plastic. Housing base of galvanised steel plate.
- Radial air exhaust through housing port.
- Electrical connection via 2 leads AWG 22, TR 64. Stripped and tinned ends.
- Mass 420 g.

SERIES RL90

121 x 121 x 37 mm

Air flow		Nominal Voltage		Noise		Sinter-Sleeve Bearings	Power Input	Nominal Speed	Temperature Range	Service Life L ₁₀ at 40 °C		Curve	Type
m ³ /h	CFM	V DC	V DC	dB(A)	bels	○/●	Watt	min ⁻¹	°C	Hours	Hours		
40	23.5	12	7...15	-	5.8	○	5.5	2500	-10...+75	62500 / 27500		1	RL90-18/12NG
40	23.5	12	7...15	-	5.8	●	5.5	2500	-30...+75	62500 / 27500		1	RL90-18/12N
40	23.5	24	12...28	-	5.8	○	5.0	2500	-10...+75	62500 / 27500		1	RL90-18/14NG
40	23.5	24	12...28	-	5.8	●	5.0	2500	-30...+75	62500 / 27500		1	RL90-18/14N



*Speed nut M4 or 8-32UNC. Screw-in depth max.12,5 min.9,0