



- AC fans with external rotor shaded-pole motor. Impedance protected against overloading.
- Impeller and mounting bracket of metal.
- Air intake over mounting bracket. Rotational direction CW looking at rotor.
- Electrical connection via 2 leads. Stripped and tinned ends.
- Mass 370 g.

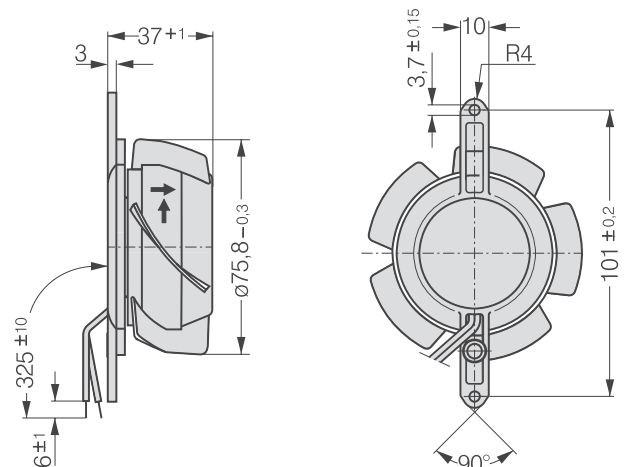
SERIES 8000 TA

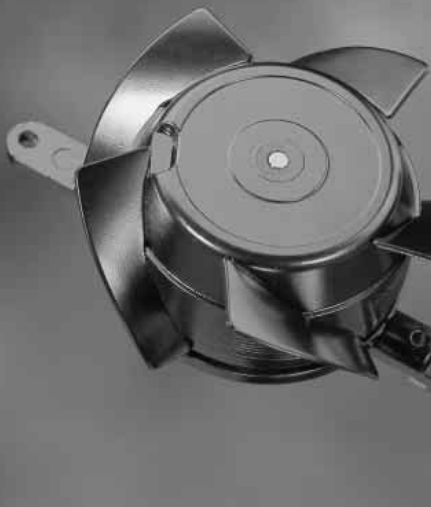
76Øx37mm

Air flow		Nominal Voltage	Frequency	Noise	Sinter-Sleeve Bearings	Ball Bearings	Power Input	Nominal Speed	Temperature Range	Service Life L ₁₀		Curve	Type
m ³ /h	CFM									V	Hz		
23	13.5	230	50	15	○	○	9	1 650	-10...+80	60 000 / 25 000	-	-	8880 TA
30	17.6	230	50	19	○	○	12	2 100	-10...+70	52 500 / 25 000	-	-	8850 TA
38	22.4	230	50	25	○	○	12	2 650	-10...+70	52 500 / 25 000	-	-	8550 TA
38	22.4	230	50	26	●	●	12	2 750	-40...+90	52 500 / 15 000	-	-	8556 TA
26	15.3	115	60	18	○	○	8	1 850	-10...+80	62 500 / 25 000	-	-	8830 TA
34	20.0	115	60	23	○	○	11	2 450	-10...+70	55 000 / 27 500	-	-	8800 TA
45	26.5	115	60	30	○	○	11	3 150	-10...+75	55 000 / 25 000	-	-	8500 TA
45	26.5	115	60	31	●	●	11	3 250	-40...+95	55 000 / 15 000	-	-	8506 TA

The air flow and noise level of fans without external housing depends on the installation conditions. The stated air flow and noise has been measured with an orifice 76.5 mm Ø at a distance of approx. 17 mm from the mounting bracket. Under exceptionally favourable mounting conditions, the air flow of fan series 8000A is achievable. The noise in the optimal operating range can only be measured for these fans in specific application.

Fan Type				Lead Wires	
8880 TA	8850 TA	8830 TA	8800 TA	325 mm long	AWG 18. TR 64
8550 TA	8500 TA			325 mm long	AWG 18. TR 64
8556 TA	8506 TA			325 mm long	AWG 18





- AC fans with external rotor shaded-pole motor. Impedance protected against overloading.
- Impeller and mounting bracket of metal.
- Air exhaust over struts. Rotational direction CW looking at rotor.
- Electrical connection via 2 leads. Stripped and tinned ends.
- Mass 370 g.

SERIES 8000 TV

76Øx37mm

Air flow		Nominal Voltage	Frequency	Noise	Sinter-Sleeve Bearings	Ball Bearings	Power Input	Nominal Speed	Temperature Range	Service Life L ₁₀		Curve	Type
m ³ /h	CFM									V	Hz		
24	14.1	230	50	15	○		9	1650	-10...+80	60000 / 25000		-	8880 TV
31	18.3	230	50	20	○		12	2100	-10...+70	52500 / 25000		-	8850 TV
40	23.5	230	50	27	○		12	2650	-10...+70	52500 / 25000		-	8550 TV
40	23.5	230	50	28	●		12	2750	-40...+90	52500 / 15000		-	8556 TV
27	15.9	115	60	18	○		8	1850	-10...+80	62500 / 25000		-	8830 TV
36	21.2	115	60	24	○		11	2450	-10...+70	55000 / 27500		-	8800 TV
47	27.7	115	60	32	○		11	3150	-10...+75	55000 / 25000		-	8500 TV
47	27.7	115	60	33	●		11	3250	-40...+95	55000 / 15000		-	8506 TV

The air flow and noise level of fans without external housing depends on the installation conditions. The stated air flow and noise has been measured with an orifice 76.5 mm Ø at a distance of approx. 17 mm from the mounting bracket. Under exceptionally favourable mounting conditions, the air flow of fan series 8000N is achievable. The noise in the optimal operating range can only be measured for these fans in specific application.

Fan Type				Lead Wires	
8880 TV	8850 TV	8830 TV	8800 TV	325 mm long	AWG 18. TR 64
8550 TV	8500 TV			325 mm long	AWG 18. TR 64
8556 TV	8506 TV			325 mm long	AWG 18

